



9 CH Network Video Recorder

NVR609LX

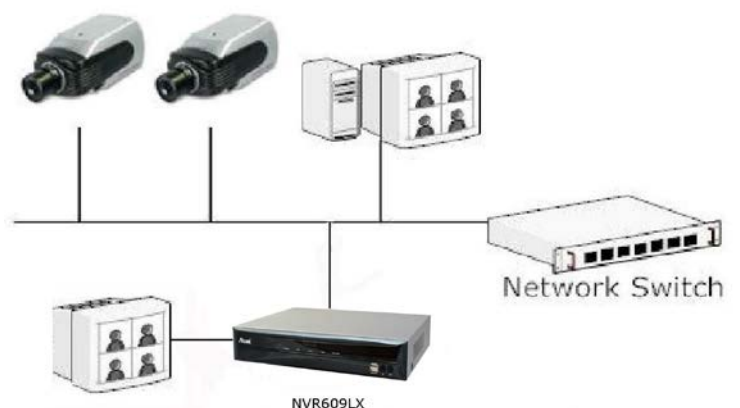
- ▶ Linux Based Standalone NVR
- ▶ Manage up to 9 IP Cameras
- ▶ Up to 270 fps, each channel@30 fps
- ▶ Up to 1920 x 1080 resolution
- ▶ IR Remote Control / VGA,HDMI for display
- ▶ High Quality Live / Playback Video
- ▶ Various Types of Event Alerts
- ▶ Multiple User Level Access Control
- ▶ Web Based Administration
- ▶ 3GPP for monitoring via 3G mobile phone

Asoni NVR609LX is designed for small scale applications such as retail store. Up to 9 IP cameras can be connected via a network and it is possible to record their camera pictures. Asoni NVR609LX is compatible with Asoni H.264 cameras and its ability to automatically search and find the available cameras on the network can greatly reduce the user effort when expanding the system.

Asoni NVR609LX can be quickly and easily configured into your existing local IP network along with the IP cameras. Users can control, record, and view live videos right on local display monitor, or through a web browser from PC on the network.

When you are on the road or travel away from your home or office, Asoni NVR609LX gives you the same level of user experience as you are inside your home or office network.

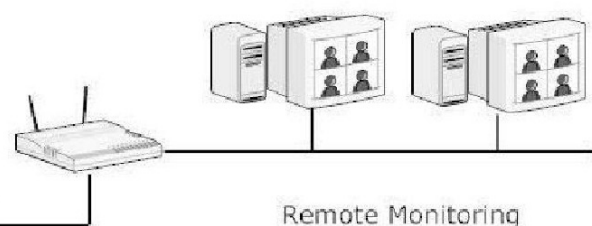
Network Cameras



Site 1



Site 2



Hardware Specification

CPU and Memory

- ▶ ARM9 600Mhz / 512MB DDR RAM

Ethernet

- ▶ 10BaseT / 100BaseT / 1000 BaseT and half duplex / full duplex auto-negotiation

HDD

- ▶ SATA HDD Slot x 4 (SATA II/III, WD/Seagate/Hitachi)
- ▶ Max. Capacity: 8TB (2TB HDDx4)

LED

- ▶ POWER / HDD / REC

Connectors

- ▶ Alarm Input x8, Output x1
- ▶ USB x 2
- ▶ RS-485 x1
- ▶ Audio In x1, Audio Out x1
- ▶ VGA Output x1, HDMI Output x1

Power

- ▶ DC 12V 5A
- ▶ Power consumption: 6.6W (without Hdd)
13.92W (with Seagate 2TB Hdd x1)

Dimensions

- ▶ 370(W) x 60mm (H) x 311mm (D)

Temperature

- ▶ Operating: 0 °C ~ 45 °C
- ▶ Storage: -20 °C ~ 60 °C

Humidity

- ▶ Operating : 10%RH ~ 80%RH
- ▶ Storage : 5%RH ~ 90%RH

Safety

- ▶ CE/FCC

Software Specification

Cameras

Model	Asoni H.264 Cameras
Add Camera	Manual / IPCam Quick Search
Max. Channels	9

Network

Protocols	HTTP/SMTP/DHCP/ARP/NTP/DNS/UPnP/FTP
Streaming Protocol	Depend on the supported cameras

Video

Compression	H.264
Resolution	FHD/ HD / MegaPixel / Full-D1 / CIF / QCIF, or depends on camera
Max. Frame Rate	270 fps

Live View (Local & IE)

Display Mode	Live View / Playback / Full Screen
Split Screen	1, 4, 9
PTZ Support	Virtual PTZ Panel / Auto Pan / Preset Point / Preset Sequence
Snapshot	Video snapshot in JPEG format

Playback (Local & IE)

Split Screen	1, 4, 9
Search Method	Time / Date, Event
Playback Controls	Play / Pause / Stop / Forward / Reverse / Speed Adjust / Frame by Frame

Recording

Capacity	Depends on hard disk
Recording Mode	Manual / Continuous / Scheduling / Event

User Management

Management	User / Group
Group Numbers	7 (Administrator / Guest / User Define x 5)
Privileges	Live View / Playback / System Configurations / Camera Configurations / Recording Configuration / Event Configuration / Maintenance

Triggers & Events

Events	System Events -- System Start / Shutdown, System Settings modified, Camera Settings Modified, Start Recycle, Disk Full Camera Events -- Motion/Sensor Detection
Event Actions	Mail / FTP/ Record
Event Recording	Pre / Post Event Settings

Logs

Log Type	Alert / Event / User Access
-----------------	-----------------------------

System (IE access)

Minimal Requirements	CPU: Intel Core 2 Due 2.53GHz RAM: 1G or above Network: 100M Network Interface or above IE Browser version 7 or above
-----------------------------	--

General

Languages	English/ Chinese/ Japanese/ Spanish/ Italian
Packaging	NVR (HDD NOT included)/ CD with Software tool / Power Adapter /IR Remote Controller