



High Capacity Network Video Recorder

## NVR7000-RAID



- ▶ Manage / Record up to 100 IP Cameras
- ▶ 400Mbps High data rate throughput
- ▶ Live view / Record / Playback / E-MAP
- ▶ Built-in RAID system manages up to 8 HDDs
- ▶ Up to 32TB total storage
- ▶ Support RAID 0, 1, 5, 10, 50, JBOD
- ▶ 2 ports of Gigabit Ethernet Connector
- ▶ Full remote control through Internet Explorer
- ▶ Supports major brands and Onvif IP camera

NVR7000-RAID is a professional network video recorder with high capacity storage. The built-in RAID system manages up to 8 HDDs and 32TB total storage. With 400Mbps throughput, the NVR can record up to 100pcs of 3 Mega-pixel or 64pcs of 5 Mega-pixel IP cameras simultaneously.

The pre-installed APV7000 Video Management Software can manage multiple IP cameras and video servers for live-view, record, playback, control, event notification and reaction. The powerful software supports the major brands and Onvif compliant IP camera and video server, it combines normal and panorama cameras into one system, and can show Live view, Playback, Record, E-MAP functions in the same time on the single screen or multiple screens.

Multiple NVR7000-RAID can be managed by a single CMS server, which offers you the possibility to build a large scale surveillance system, and live-view, playback, manages all cameras at the single platform.

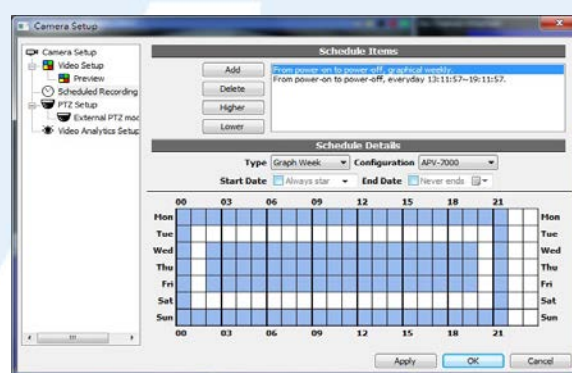
### Feature Highlights

#### Record

- Built-in RAID system, provides large and reliable recording storage
- Record up to 100 IP cameras simultaneously
- Full-time, Schedule, Event and Manual recording
- Specific-schedule recording for special date / time
- Pre/ Post event recording: Pre-alarm / Post-alarm
- Automatically overwrite when disk is full
- Storage can be expanded with eSATA/USB3.0 DAS and iSCSI NAS

#### Live View

- Supports Full-HD monitor, UI display resolution up to 2592x1944
- Multiple monitors display: 6 for live-view, playback, E-MAP
- Various split window viewing modes
- User-defined channel sequence and layout
- Supports 2-way audio
- Supports digital PTZ zoom-in





High Capacity Network Video Recorder

# NVR7000-RAID

## Playback

- 16 Multiple channels playback simultaneously
- Quickly select event video from event list
- Smart search recorded video by time list
- User-defined to search event from the browse channel
- Supports digital zoom
- Pan/tilt/zoom video of panoramic camera during playback
- Export recorded video as video clip or picture

## E-MAP / Google Map

- Supports local map and Google map
- Live-view and instant event notification
- Various icons for identify the channel, and map
- Motion and alarm list for select and play the post event video
- Adjustable map size to fit the window

## Panorama & Event

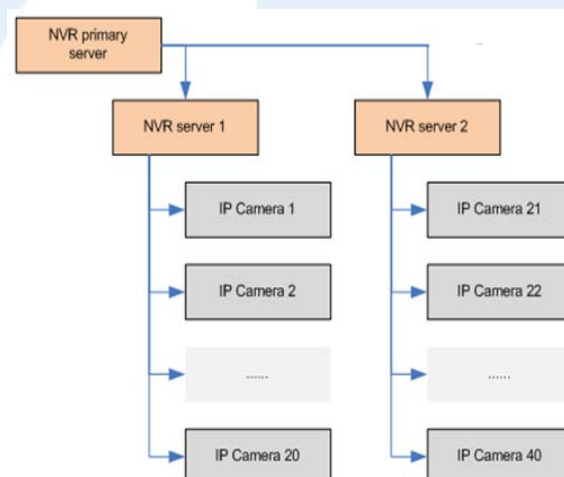
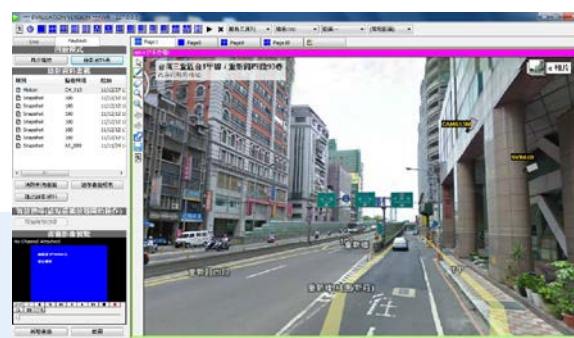
- Advanced panoramic technology, pan/tilt/zoom video to any area
- In playback, allows pan/tilt/zoom to different area than live view
- Various panorama view modes for both live view and playback
- Supports up to 5 Mega-pixel fisheye camera
- Motion and digital input detection
- Various reaction when event is triggered: Record / E-mail / FTP notification / Play warning sound / Pop-up video

## CMS Server Function

- Manages up to 64 NVR servers
- Live-view/ Playback from all connected NVR servers
- Receive notification from all connected NVR servers
- Direct configure connected NVR servers

## Remote Access

- Fully remote access/ control by NVR Client program
- Fully remote access/ control via IE browser
- Remote live-view via iPhone, Andriod smart phone





High Capacity Network Video Recorder

## NVR7000-RAID

### NVR7000-RAID Specification

Hardware Style	Rack-mount 4U		
CPU / RAM	Intel Core i7-4770 (Haswell) 3.4GHz / 8GB DDR3		
Display Card	Independent display card with 2GB RAM, HDMI / DVI-D / D-Sub video output		
Network port	2 ports of Gigabits Ethernet		
External Ports	4x USB2.0 (for mouse, keyboard); 2x USB3.0 (for DAS); 1x eSATA (for DAS)		
System HDD	3.5" SATA III 1TB		
Operating System	Windows 7 Professional 64-bit		
RAID Function	RAID host adapter, 6Gb/s, 8 internal channels Supports 0, 1, 5, 10, 50, JBOD (RAID 5 is recommended)		
Internal Storage HDD Slot	3.5" SATA III HDD x 8 (Not included), 1TB ~ 4TB per drive Recommend HDD: WD Se series / WD Re series		
Storage Capacity	RAID 5: Up to 28TB      JBOD: Up to 32TB		
Record / View Performance	Maximum throughput: 400Mbps Maximum connecting cameras: 100 cameras. Amount of camera is different according to camera resolution, see below:		
- Camera Resolution	5 Mega-pixel	3 Mega-pixel	2 Mega-pixel and Lower
- Constant Bit Rate (CBR)	6 Mbps	4 Mbps	2 Mbps
- Simultaneous Recording Cameras	Up to 64 Cameras	Up to 100 Cameras	Up to 100 Cameras
- Simultaneous Local View Channels	Up to 36 Channels per page, quantity of page is not limited		
- Remote Output Channels	Up to 150 simultaneous connections outputs to local and remote client PC * 1 connection = 1 live view or 1 playback channel		
Support Camera Model	Major camera brands and Onvif compliant		
External Storage	DAS (Direct Attached Storage): connected via eSATA or USB3.0 interface NAS (Network Attached Storage): connected via iSCSI		
Power Requirements	AC 100V ~ 240V		
Operating Temperature	0°C ~ 40°C (32°F ~ 104°F)		
Relative Humidity	10% ~ 85% Non-condensing		
Dimensions	487 (W) x 180 (H) x 515 (D) mm		
Weight	11 kg / 24.25 lbs (without Storage HDD)		

### Client/CMS PC Specification

CPU / RAM	Intel Core i7-4770 (Haswell) 3.4GHz / 8GB DDR3
Display Card	Independent display card with 2GB RAM
Network port	Gigabits Ethernet
Operating System	Windows 7 Professional 64-bit
Simultaneous Live View Channels	Up to 49 Channels per page, quantity of page is not limited